

TMAS PC Manager Quick User Guide

Step 5: Direct Wire Configuration

- Make sure the TMN-5000i is connected to the PC and is powered on.
- After, click on the Direct Wire Configuration button and select the comport and device type that the TMAS device is connected to.
- Finally, click Configure button to begin.
- Configuration Status will display the status of the configuration as shown in Figure 9.



Figure 9: Direct Wire Configuration

Step 6: To Deploy TMN-5000i

- Once the TMN-5000i is being programmed via PC Manager software, it can be immediately deployed at remote site to monitor and control the desired equipment.
- When any input triggering via dry contact, TMN-5000i will send out the message in Default or User Define Message to mobile users.
- For this guided, when Input Channel 0 is triggered, User Define Message-> 'Power Supply Is Failure' will send out from device TMN-5000i to user Nick.

How To Receive Alert Message From TMN-5000i?

Step 1: Please download PC Manager software

- PC Manager download url: <https://bit.ly/2RIKhd6>
- Or use QR code to download PC manager software:



Step 2: Login TMAS PC Manager

- Click on Login button
- Key in the default user name & password as below:
User name: Admin
Password : Admin
- Login window as shown in Figure 1.



Figure 1: Login Page

Step 3: Add Authorized Users to Receive Alert Message

- Click on User Manager button and select Add button on User Manager window as shown in Figure 2.
- After, key in the User Name & Mobile No as shown in Figure 3.
Example:
User Name: Nick
Mobile No : 8523 3863
- Set status to active and click on the Save button.

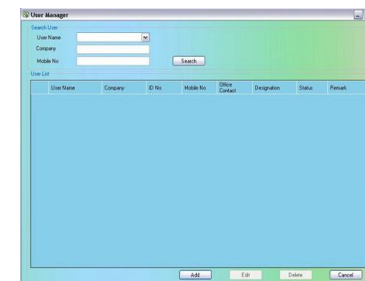


Figure 2: User Manager

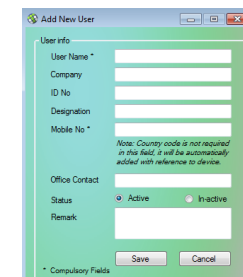


Figure 3: Add New User

Step 4: Add a New Device

- For this guided, TMN-5000i is used as an example.
- Click on Add Device button on Device Manager window shown in Figure 4.
- Select the device TMN-5000i in Device Selection window shown in Figure 5.

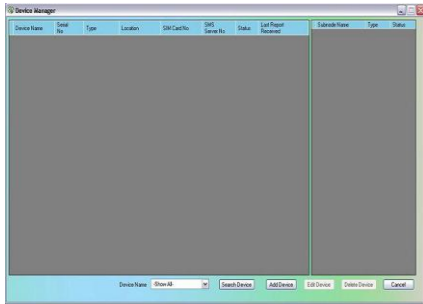


Figure 4: Device Manager



Figure 5: Device Selection

- After, click on Add button.
- The Device Info Setting window will appear as shown in Figure 6.
- Under the Device Info tab, please key in the following details at *Compulsory field, for example:
 - I. Device Serial No -> 26532223
 - II. Device Name -> BLK 688F
 - III. Country Code -> 65
 - IV. Device SIM Card No -> 9999 8888
 - V. Data Center -> SMS Server 1

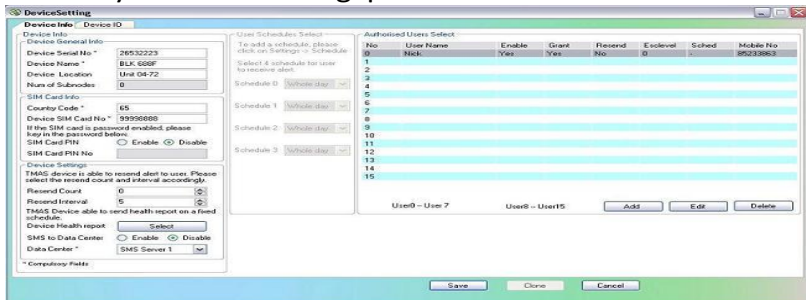


Figure 6: Device Info Setting

- Click on the Add button on the section of Authorized Users Select.
- Tick the authorized user Nick on the Authorized Users Select window as shown in Figure 7.
- After, click on the OK button.

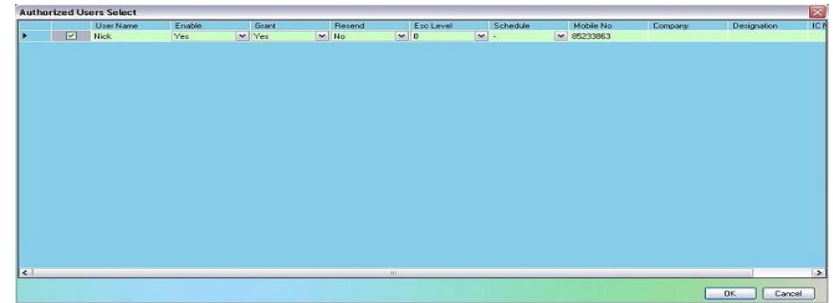


Figure 7: Authorized Users Select

- Under Device IO tab, enable the input setting at input channel 0 as shown in Figure 8, for example:
 - I. Enable Channel: Tick to Enable
 - II. Default/ UDM: Select UDM
 - III. Norm Open/ Norm Close: Select Norm Open
 - IV. Channel Name: Power Supply
 - V. User Define Message (UDM): Power Supply Is Failure
 - VI. Tick the Nick at User List
- After, click on the Save button.

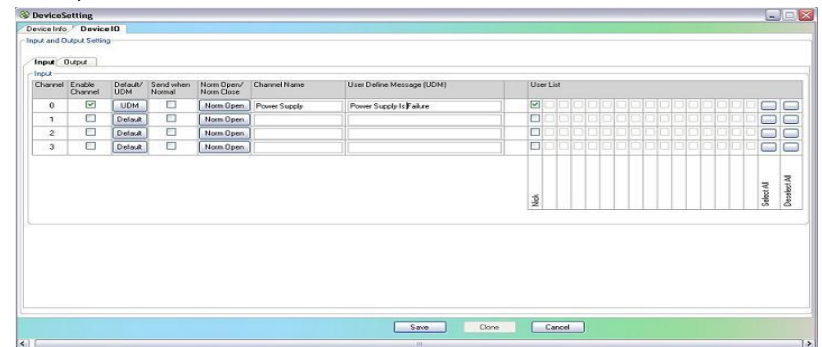


Figure 8: Input Setting